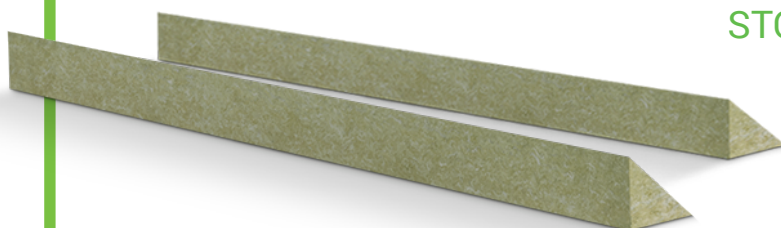


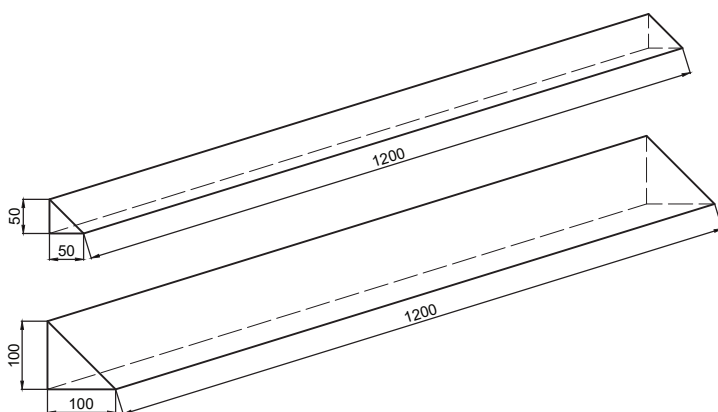
TECHNICAL SHEET

MW60 PETRASLOPE-W

STONE WOOL WEDGE



DIMENSIONS:



PRODUCT INFORMATION:

Stone wool wedges used to insulate the elements protruding above the roof surface: attics, chimneys, skylights, roof hatches

They prevent bending and facilitate the installation of waterproofing membranes in corners.

Highest fire performance class
– A1 Euroclass

If you require other wedge dimensions,
please contact your Regional Sales Manager.

FACTORY:

PETRALANA S.A.
ul. Konstytucji 74
41-905 Bytom
+48 32 770 05 00
biuro@petralana.eu

PRODUCT CODE

MW 60 MW-EN 13162-T5-DS(70,90)-CS(10)60-PL(5)550-WS-WL(P)-MU1

DECLARED THERMAL CONDUCTIVITY COEFFICIENT λ_D

$\leq 0,040$ [W/mK]

DECLARED PARAMETERS

DECLARED PROPERTIES OF THE PRODUCT ACC. TO EN 13162:2013-05	SYMBOL	CLASS OR TOLERANCE	UNITS	
Class for thickness tolerances	T	T5	-1 mm / +3 mm	[mm]
			-1 % / +3 mm	[%/mm]
Dimensional stability under 70°C and 90% humidity	DS(70,90)	$\leq 1,0$	[%]	
Compressive stress at 10% deformation	CS(10/Y)	CS(10)60	[kPa]	
Tensile strength perpendicular to faces	TR	NPD	[kPa]	
Point load at 5mm deformation	PL(5)	$\geq 550,0$	[N]	
Short time water absorption	WS	$\leq 1,0$	[kg/m ²]	
Long time water absorption	WL(P)	$\leq 3,0$	[kg/m ²]	
Water vapour transmission	MU	MU1	[-]	
Air flow resistivity	AFr	NPD	[kPa s/m ²]	
Reaction to fire	RtF	A1	Euroclass	

WEDGE SIZE

No	Length	Width	Thickness	Declared thermal resistance λ_D
	[mm]	[mm]	[mm]	[W/mK]
1	1200	50	50	40
2	1200	100	100	40