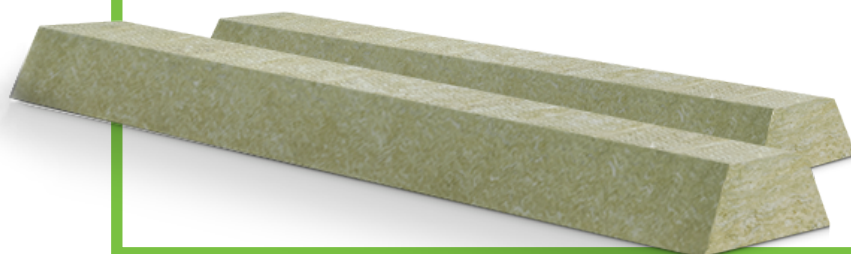


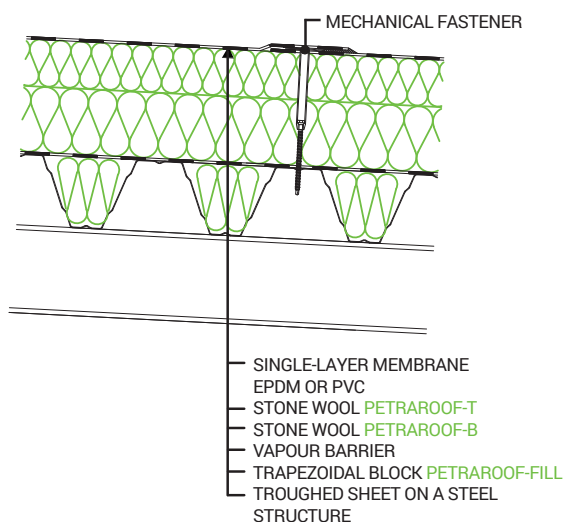
TECHNICAL SHEET

MW60 PETRAROOF-FILL



STONE WOOL
TRAPEZOIDAL BLOCKS

APPLICATION EXAMPLE:



The shape and size of the blocks is individually tailored to Customer requirements. Please contact the Regional Sales Manager to get an individual offer.

FACTORY:

PETRALANA S.A.
ul. Konstytucji 74
41-905 Bytom
+48 32 770 05 00
biuro@petralana.eu

PRODUCT INFORMATION:

Stone wool blocks with trapezoidal cross-section, used to fill troughed sheets.

Improved acoustic and thermal insulation.

Used to level the roof surface for the first insulation layer.

The shape and size of the blocks is tailored to a given type of troughed sheet during the production process

Highest fire performance class –
A1 Euroclass

PRODUCT CODE

MW 60 MW-EN 13162-T5-DS(70,90)-CS(10)60-PL(5)550-WS-WL(P)-MU1

DECLARED THERMAL CONDUCTIVITY COEFFICIENT λ_D

$\leq 0,040$ [W/mK]

DECLARED PARAMETERS

DECLARED PROPERTIES OF THE PRODUCT ACC. TO EN 13162:2013-05	SYMBOL	CLASS OR TOLERANCE		UNITS
Class for thickness tolerances	T	T5	-1 mm / +3 mm	[mm]
			-1 % / +3 mm	[%/mm]
Dimensional stability under 70°C and 90% humidity	DS(70,90)	$\leq 1,0$		[%]
Compressive stress at 10% deformation	CS(10/Y)	CS(10)60		[kPa]
Tensile strength perpendicular to faces	TR	NPD		[kPa]
Point load at 5mm deformation	PL(5)	$\geq 550,0$		[N]
Short time water absorption	WS	$\leq 1,0$		[kg/m ²]
Long time water absorption	WL(P)	$\leq 3,0$		[kg/m ²]
Water vapour transmission	MU	MU1		[-]
Air flow resistivity	AFr	NPD		[kPa s/m ²]
Reaction to fire	RtF	A1		Euroclass